

HAWK

Since 1971

Industrial Dial Thermometer

SS Case/Back Flange



Linear dial graduations

Liquid, mercury or gas actuations available

Stainless steel bulb, capillary and armour

Hermetically sealed SS case and back flange

Remote Reading

Various thermal system and bulb for your applications

HAWK Dial thermometers are designed to measure and indicate the temperature of a specific application or condition which are available in four system actuation fills including liquid, mercury, vapor and gas. The DSL and DSB series dial thermometer is a remote reading design with stainless steel case and Back Flange for surface mounting. These instruments are leak tested completely to insure the integrity of the joints in the process of producing. HAWK Supplies a wide selection of the available temperature ranges from -50°C to 600°C or equivalent in $^{\circ}\text{F}$.

DSL, DSB Series

Typical Applications:

★Petrochemical, oil and gas processing ★Medical and pharmaceutical industry ★Dairy processing
★Food and beverage processing ★Power generating stations ★offshore oil platforms ★Pulp and paper mills
★Waste water treatment★Marine Industry ★Military ★Industrial OEM equipments

Specifications:

Operating:

The temperature of the case should not be allowed to be exposed to continuous temperature in excess of 200°F (95°C).).

The appropriate operating range falls in the middle half of the gauge (25% to 75% of full scale). The max operating range should not exceed the 75% of the full range.

Immersion:

For getting the correct temperature readings, the sensitive bulb of all models in all ranges must be fully immersed into the medium being measured.

Thermowell:

Use of a thermowell is recommended when stem or bulb would be exposed to pressure, corrosive fluid or high velocity media.

Use of a thermowell permits calibration check without interrupting or shutting the process.

Thermowells are available in various styles, connections, materials and sizes. Please refer to HAWK Thermowell catalogs for detailed informations.

Size:

3"(75mm), 3 1/2"(90mm),
4"(100mm), 4 1/2"(115mm) or
6"(150mm)

Case&Ring:

Stainless Steel 304(SS316-option),
polished bayonet ring

Dial Face

Aluminum, white background with black graduations and figures, anti-parallax to minimize the reading error available

Sensing Element:

Bourdon Tube with liquid, mercury or gas

Window:

Plain Glass-standard
Tempered safety, Polycarbonate
or laminated safety glass-optional

Weatherproof:

NEMA 4X/IP65 enclosure as per
IEC 529 UNI 8896

Pointer:

Anodized aluminum with black finish

Accuracy:

$\pm 1.0\%$ of span or one scale division

External Adjustment:

External re-calibration on back

Scale:

$^{\circ}\text{C}$, $^{\circ}\text{F}$ (single or dual scale)

Capillary:

304 SS Capillary with Armour,
(316SS on request)

Thermal Bulb

304 Stainless Steel, 3/8" or 10mm
diameter-Standard, others dia
available

Connection:

Thread..... 1/2", 3/8", 1/4" NPT
standard, JIS, DIN, M14*1.0
and M20*1.5 available
Plain
Male swivel nut
Sliding male swivel nut
Female swivel nut
Sliding female swivel nut

HAWK GAUGE CO., LTD

Pressure Temperature Level Flow

[Http://www.hawkgauge.com](http://www.hawkgauge.com)

ISO
9001
Certified

Option:

Tempered safety glass lens	Laminated safety glass lens	Polycarbonate lens
Gray background dial	No logo dial	Customer dial
PTFE coated bulb	Anti-parallax dial(gray background)	Anti-parallax dial
Stainless steel tag with red words	5/16" diameter stem	External mounting bracket
Maximum and minimum pointer	316 stainless steel case and ring	316 stainless steel wetted parts
Improved accuracy 0.5%(Grade 2A-ASME B40.1)		DIN standard
Maximum pointer	Electrical alarm contact	Certification of calibration

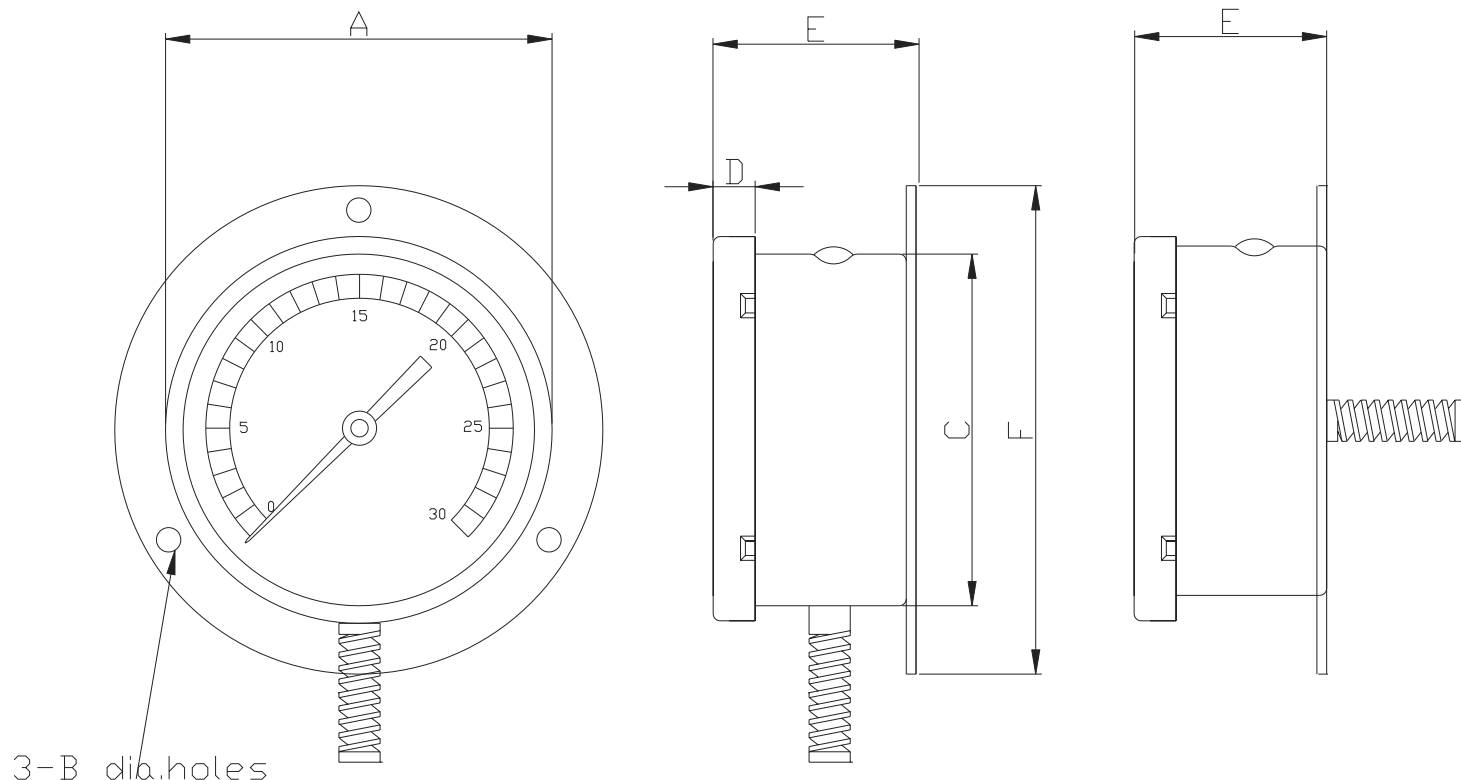
Pressure Range:

Single Scale °F		Single Scale °C		Dual Scale °C&°F	
Code	Dial Range	Code	Dial Range	Code	Dial Range
H1	-100/+100 °F	H14	-50/+100 °C	H32	-50/+100 °C&-58/+212 °F
H2	-80/+120 °F	H15	-50/+50 °C	H33	-50/+50 °C&-58/+122 °F
H3	-40/+160 °F	H16	-20/+120 °C	H34	-20/+120 °C&-4/+248 °F
H4	-20/+120 °F	H17	-20/+80 °C	H35	-20/+80 °C&-4/+176 °F
H5	0/+200 °F	H18	-20/+40 °C	H36	-20/+40 °C&-4/+104 °F
H6	0/+250 °F	H19	0/+50 °C	H37	0/+50 °C&32/+122 °F
H7	50/300 °F	H20	0/+60 °C	H38	0/+60 °C&32/+140 °F
H8	50/400 °F	H21	0/+80 °C	H39	0/+80 °C&32/+176 °F
H9	50/500 °F	H22	0/+100 °C	H40	0/+100 °C&32/+212 °F
H10	50/550 °F	H23	0/+120 °C	H41	0/+120 °C&32/+248 °F
H11	150/750 °F	H24	0/+150 °C	H42	0/+150 °C&32/+302 °F
H12	100/800 °F	H25	0/+200 °C	H43	0/+200 °C&32/+392 °F
H13	200/1000 °F	H26	0/+250 °C	H44	0/+250 °C&32/+482 °F
		H27	0/+300 °C	H45	0/+300 °C&32/+572 °F
		H28	0/+400 °C	H46	0/+400 °C&32/+752 °F
		H29	0/+450 °C	H47	0/+450 °C&32/+842 °F
		H30	0/+500 °C	H48	0/+500 °C&32/+932 °F
		H31	100/+550 °C	H49	100/+550 °C&212/+1022 °F

1. The other scales and ranges(DIN) are available in request.

2. Not all listed ranges and scales are in stock, Consult your distributors for available.

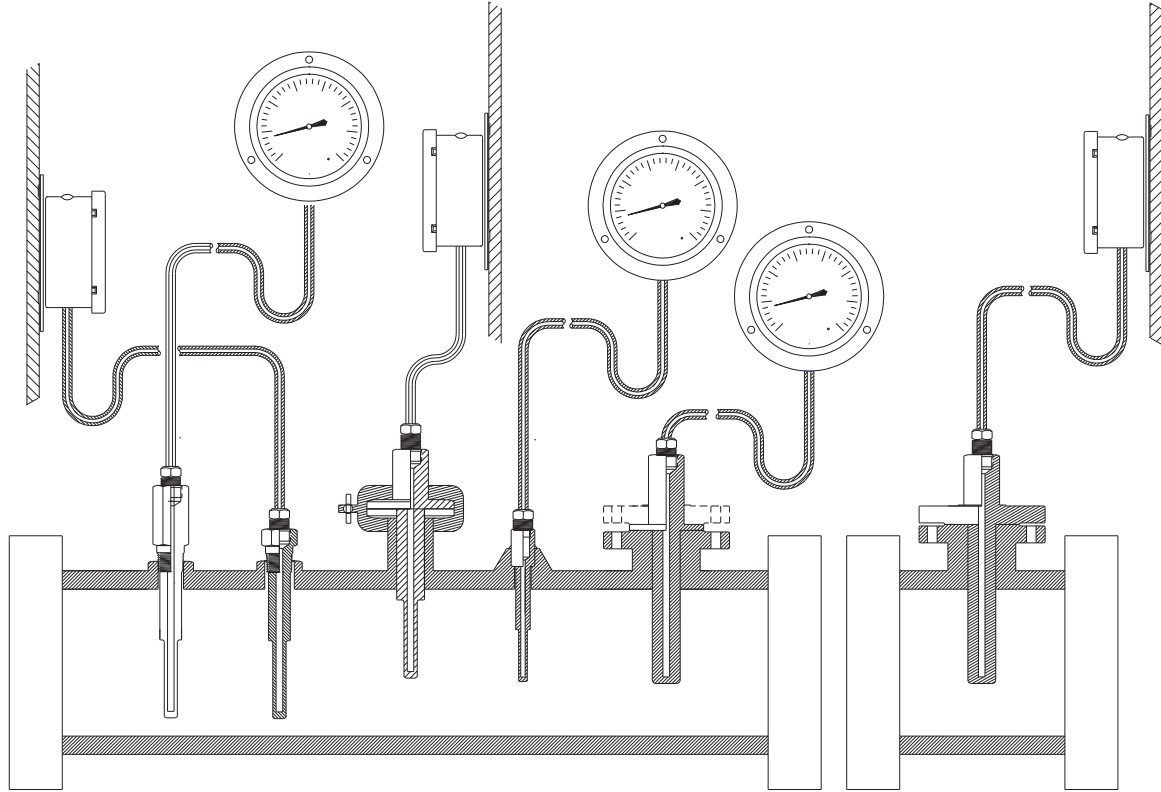
Dimensions:



SIZE	A	B	C	E	F
3"(75mm)	3.35" (85mm)	0.16" (4mm)	2.95" (75mm)	2.05" (52mm)	3.98" (101mm)
3 1/2"(90mm)	3.98" (101mm)	0.24" (6mm)	3.60" (91.5mm)	2.05" (52mm)	5.16" (131mm)
4"(100mm)	4.65" (118mm)	0.24" (6mm)	4.25" (108mm)	2.05" (52mm)	5.39" (137mm)
4 1/2"(115mm)	5.16" (131mm)	0.24" (6mm)	4.61" (117mm)	2.05" (52mm)	6.30" (160mm)
6"(150mm)	6.26" (159mm)	0.24" (6mm)	5.91" (150mm)	2.05" (52mm)	7.72" (196mm)

Thermowell:

Please refer to HAWK thermowell data sheets for detailed information.



Dial thermometer
with electrical
warning contact



HAWK

Since 1971

Industrial Dial Thermometer

SS Case/Back Flange

Order Information:

DSL	M	40	S2	385025	120	H42	XXX
Type No:	Actuation:	Dial Sizes:	Process Conn:	Bulb Sizes:	Capillary Length:	Temperature Range:	Option:
DSL -SS Case with Back Flange, Bottom Conn DSB -SS Case with Back Flange, Back Conn	V -Vapor L -Liquid M -Mercury G -Gas	30 -3" (75mm) 35 -3 1/2" (90mm) 40 -4" (100mm) 45 -4 1/2" (115mm) 60 -6" (150mm)	2 -Thread Male 1/2"NPT Male 3 -Thread Male 3/8"NPT 5 -Thread Male 3/4"NPT A -Thread Male 1/2"PT B -Thread Male 1/4"PT D -Thread Male G 1/2"(1/2"BSP) E -Thread Male G 1/4"(1/4"BSP) P -Plain No Thread S2 -Swivel Nut 1/2"NPT Male SD -Swivel Nut 1/2"BSP Male X2 -Rotating Female 1/2"NPT Male XD -Rotating Female 1/2"BSP Male Z2 -Sliding Adjustable 1/2"NPT Male ZD -Sliding Adjustable 1/2"BSP Male	Width W...0.385"(3/8") Code 385 W...0.4375(7/16") Code 438 W...0.5"(1/2") Code 500 W...0.625"(5/8") Code 625 W...10mm Code 6mm W...10mm Code 8mm W...12mm Code m12 W...13mm Code m13 W...16MM Code m16 Length Code 025...2 1/2" Code 040...4" Code 060...6" Code 090...9" Code 120...12" Code 150...15" Code 180...18" Code 240...24"and so on Code 01m...01m Code 10m...10m Code 50m...50mand so on	025 ...2 1/2 feet 040 ...4 feet 060 ...6 feet 090 ...9 feet 120 ...12 feet 150 ...15 feet 180 ...18 feet 240 ...24 feetand so on 01m ...1m 05m ...5m 10m ...10m 50m ...50mand so on	Please refer to the range table and write down the code you need. Celsius Fahrenheit	PW -Polycarbonate Window LSG -Laminated Safety Glass Lens TSG -Tempered Safety Glass Lens APG -Anti-parallax dial(gray background) GD -Gray background dial APD -Anti-parallax dial NLD -No logo dial CD -Customer dial MP -Maximum pointer MMP -Maximum and Minimum pointer SW -316 stainless steel wetted parts SC -316 stainless steel case and ring EWC -Electrical alarm contact