

**Product Data Sheet**

**D Type Injection Double Block and Bleed Valve**

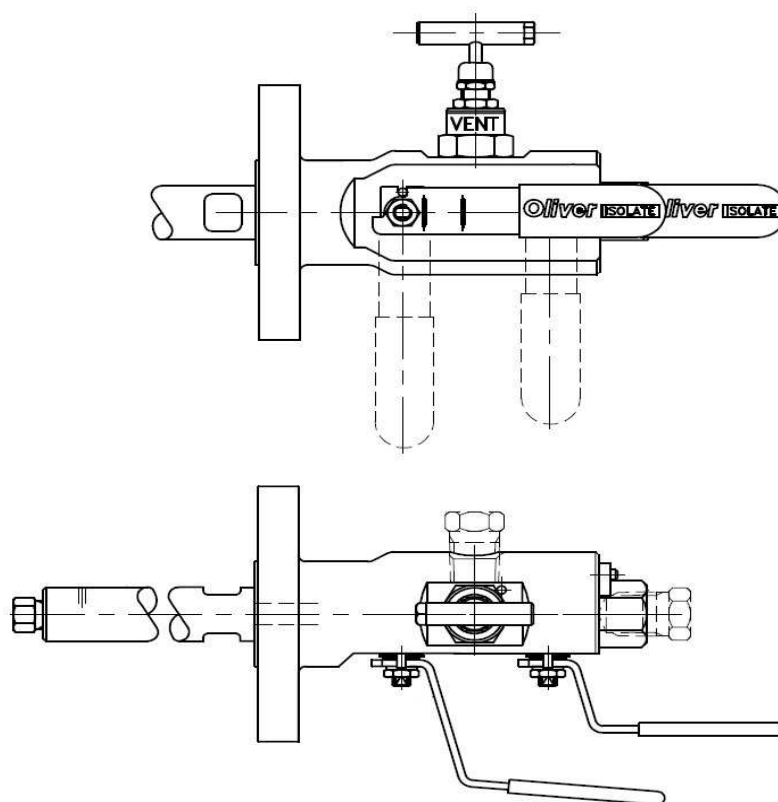


The Oliver Valves D Type Injection Double Block and Bleed Valve features an outlet check valve with two ball pattern primary and secondary isolating valves with a heavy-duty needle vent valve.

**Key features**

- Compact “grain controlled” double block and bleed valve
- Needle valve features non-rotating, anti-galling tip
- Anti-blow out spindle
- Full bore ball valve
- ANSI B16.5 flange dimensions
- Available flange x flange or flange x screw

**General Arrangement Drawing**



Max Rating  
Maximum temperature  
Metal to metal seated ball valve  
Soft seated ball valve

2,500lb class  
240°C

Rev 1.1