

Product Data Sheet

F Type Injection Double Block and Bleed Valve



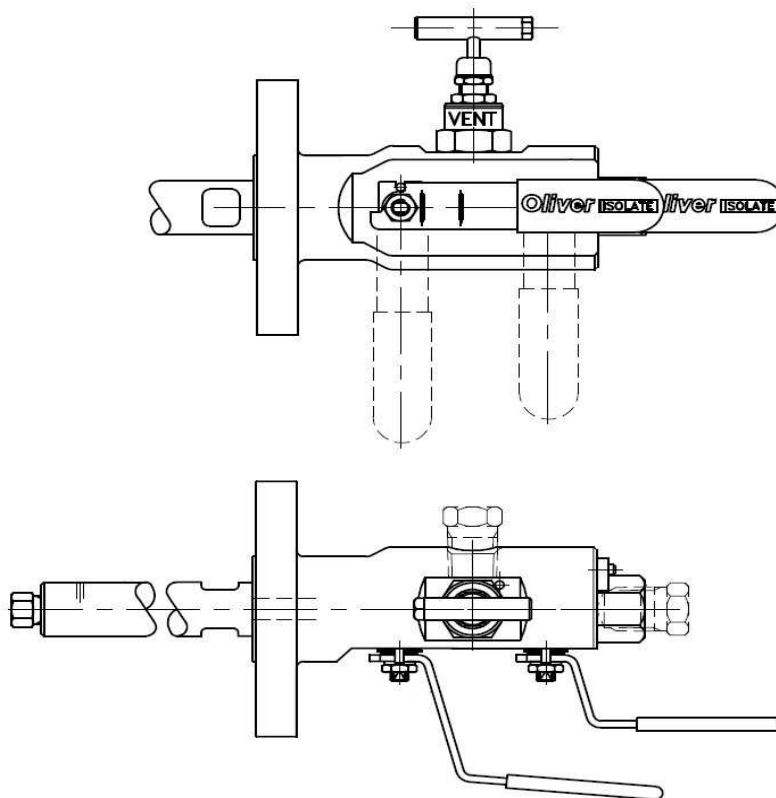
The Oliver Valves F Type Injection Double Block and Bleed Valve features an outlet check valve with three ball pattern primary and secondary isolating valves and vent valve.

Key features

- Compact “grain controlled” double block and bleed valve
- Needle valve features non-rotating, anti-galling tip
- Anti-blow out spindle
- Full bore ball valve
- ANSI B16.5 flange dimensions
- Available flange x flange or flange x screw

Flange x flange option shown

General Arrangement Drawing



Flange x screw option shown

Max Rating
Maximum temperature
Metal to metal seated ball valve
Soft seated ball valve

2,500lb class
240°C

Rev 1.1

Oliver Valves Ltd, Parkgate Industrial Estate, Knutsford, Cheshire, WA16 8DX. United Kingdom.

T: +44 (0)1565 632636 E: sales@valves.co.uk W: www.valves.co.uk

© Oliver Valves Ltd 2009