

Product Data Sheet

Gauge Block Monoflange Valve

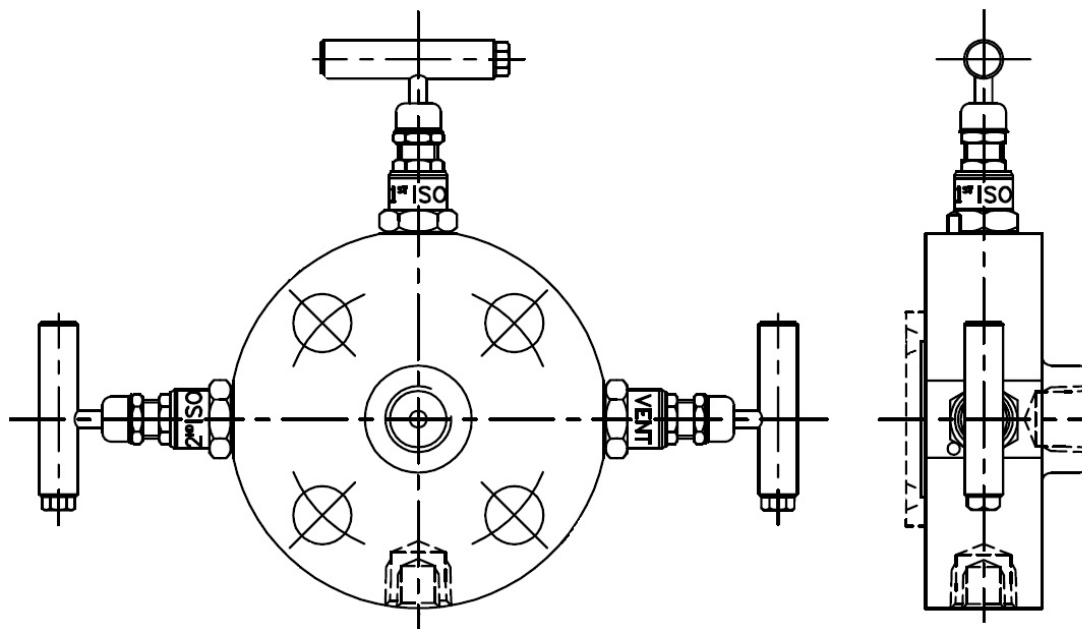


Gauge block monoflange valves work in conjunction with a pre-installed primary isolate valve. They provide compact instrument double block and bleed valving. This range is also available in both single block and single block and bleed configurations.

Key Features of the Oliver Gauge Block Monoflange Valve

- Double Block and Bleed valves
- Block and Bleed valves
- Single Block Valve
- Primary isolate – Needle pattern
- Secondary isolate – Needle pattern
- Bleed valve – Needle pattern
- Horizontal and vertical instrument connections
- Valves designed to connect with ANSI B16.5 flanges

General Arrangement Drawing



Ordering Code

| (Typical example) → Model / Type | Mono | / | BK | / | S | / | 50F-150RF | / | 50F/25F | / | HL/NA |
|--|------|---|----|---|---|---|-----------|---|---------|---|-------|
| Mono – mono flange | | | | | | | | | | | |
| Model | | | | | | | | | | | |
| BK - block BB – block and bleed DBB – double block and bleed | | | | | | | | | | | |
| Material Selection | | | | | | | | | | | |
| C – Carbon steel ASTM A320 LF2 S – Stainless steel ASTM A182 F316 Other materials available by request | | | | | | | | | | | |
| Flange details | | | | | | | | | | | |
| Flange size 50 - ½" 75 - ¾" 10 - 1" 150 - 1½" 200 - 2" 300 - 3" | | | | | | | | | | | |
| Flange class 150 – 150lb 300 – 300lb 600 – 600lb 900 – 900lb 1500 – 1500lb 2500 – 2500lb | | | | | | | | | | | |
| Flange type RTJ – Ring type joint RF – Spiral finish raised face | | | | | | | | | | | |
| Instrument / Vent | | | | | | | | | | | |
| Connection size 25 - ¼" (std vent) 38 - ¾" 50 - ½" (std process/instrument) | | | | | | | | | | | |
| Instrument connection (NPT standard) BP – BSP parallel pipe thread BS2779-1986 BT – BSP taper pipe thread BS21 - 1985 CE – Compression fitting LJTA – Lap Joint Tube Adaptor GA – Swivel Gauge Adaptor | | | | | | | | | | | |
| Options | | | | | | | | | | | |
| ATV – Anti-tamper on vent FS – Firesafe to API 607 HL – Handle locking NA – NACE MR-01-75 (latest revision) | | | | | | | | | | | |

Rev 1.2