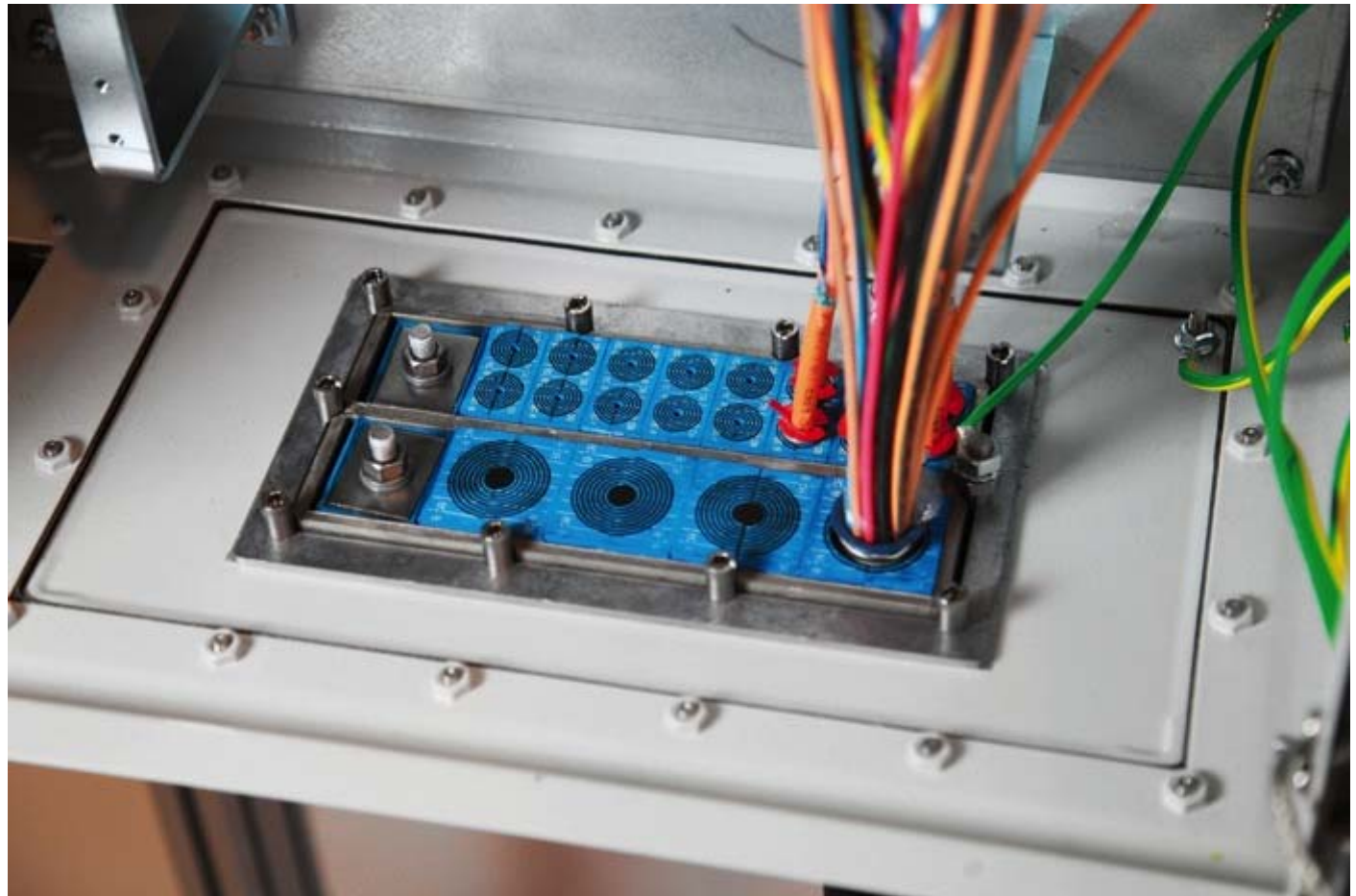


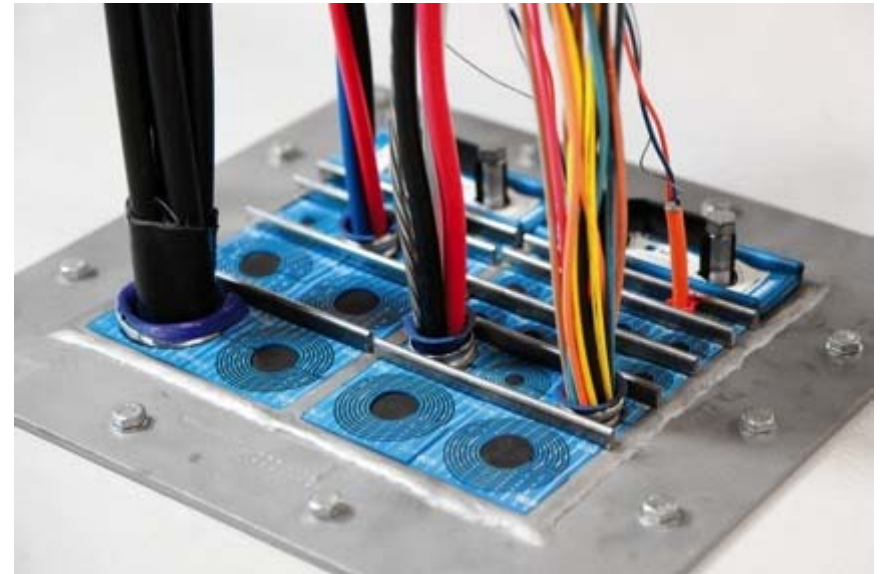


# Roxtec BG™ sealing solutions



# Cable entry solutions for metal clad and armor cables

- Bond and ground in an efficient way
- Ensure electrical safety
- Protect people and equipment





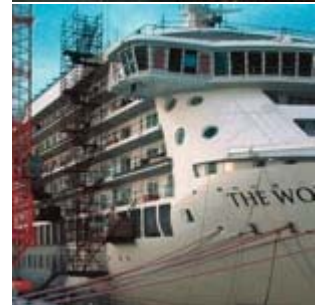
# The Roxtec BG™ (Bonding & Grounding) product family



- Seal maximum quantity of cables in minimum space
- Use it in building structures, cabinets and enclosures
- Save design and installation time – and reduce costs!

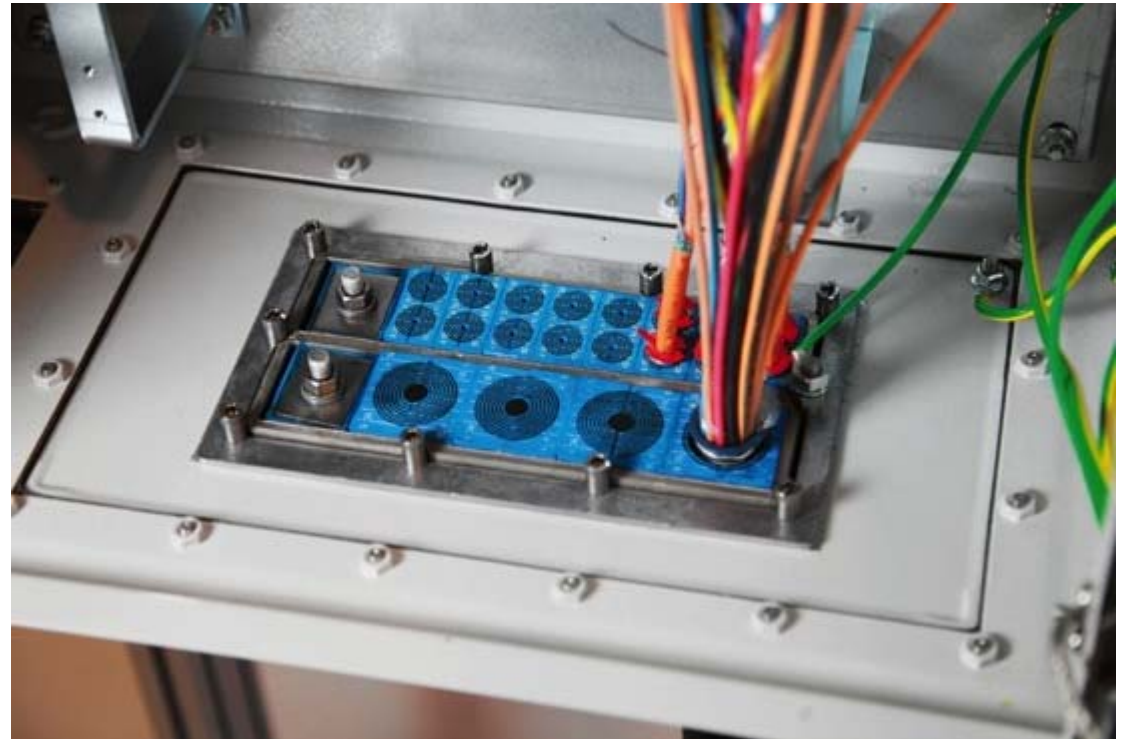
# Wide range of applications

- Oil, gas and petrochemical applications
  - Marine
  - Nuclear and power generation facilities
  - Telecom
  - OEM
  - Construction
- Availability and support worldwide!





## Save space and money

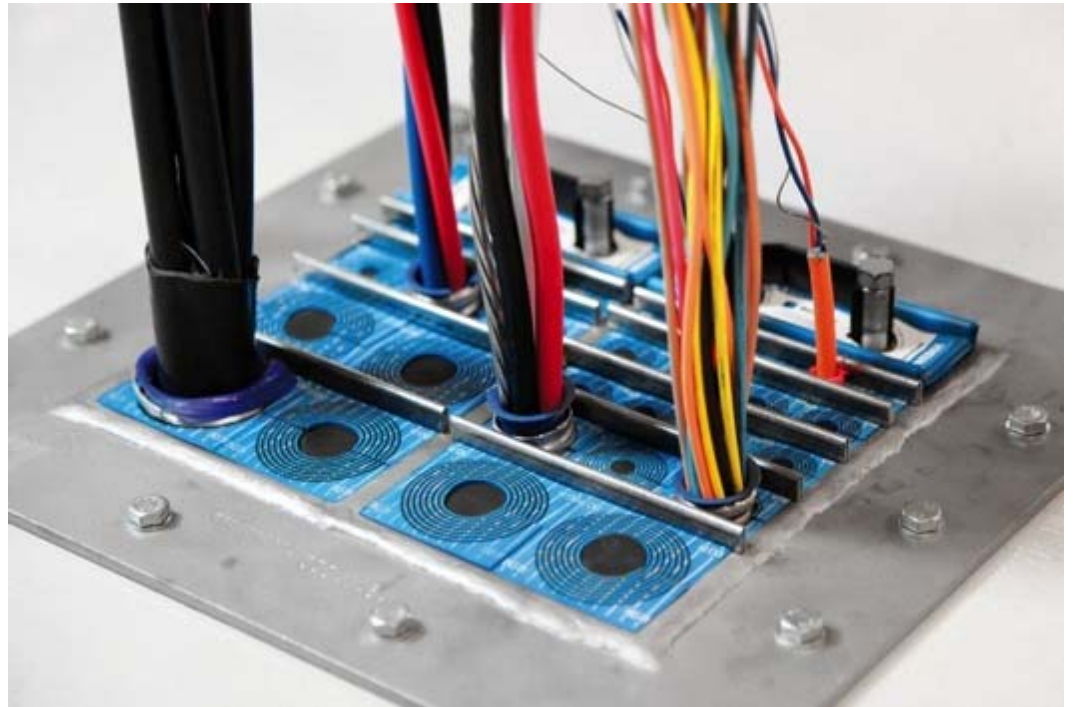


- Up to 70% more area efficient than cable glands
- Direct replacement to traditional glands, hubs and connectors for certified cable termination
- Single or multiple cables of different sizes in a single entry.





## Specify for walls and floors



- Entries into fixed or pre-fabricated buildings
- A single cut-out for installing your complete cable load  
– with each cable grounded to electrical standards
- Add or remove cables with ease, without any additional components. Allows for pre-terminated cables.

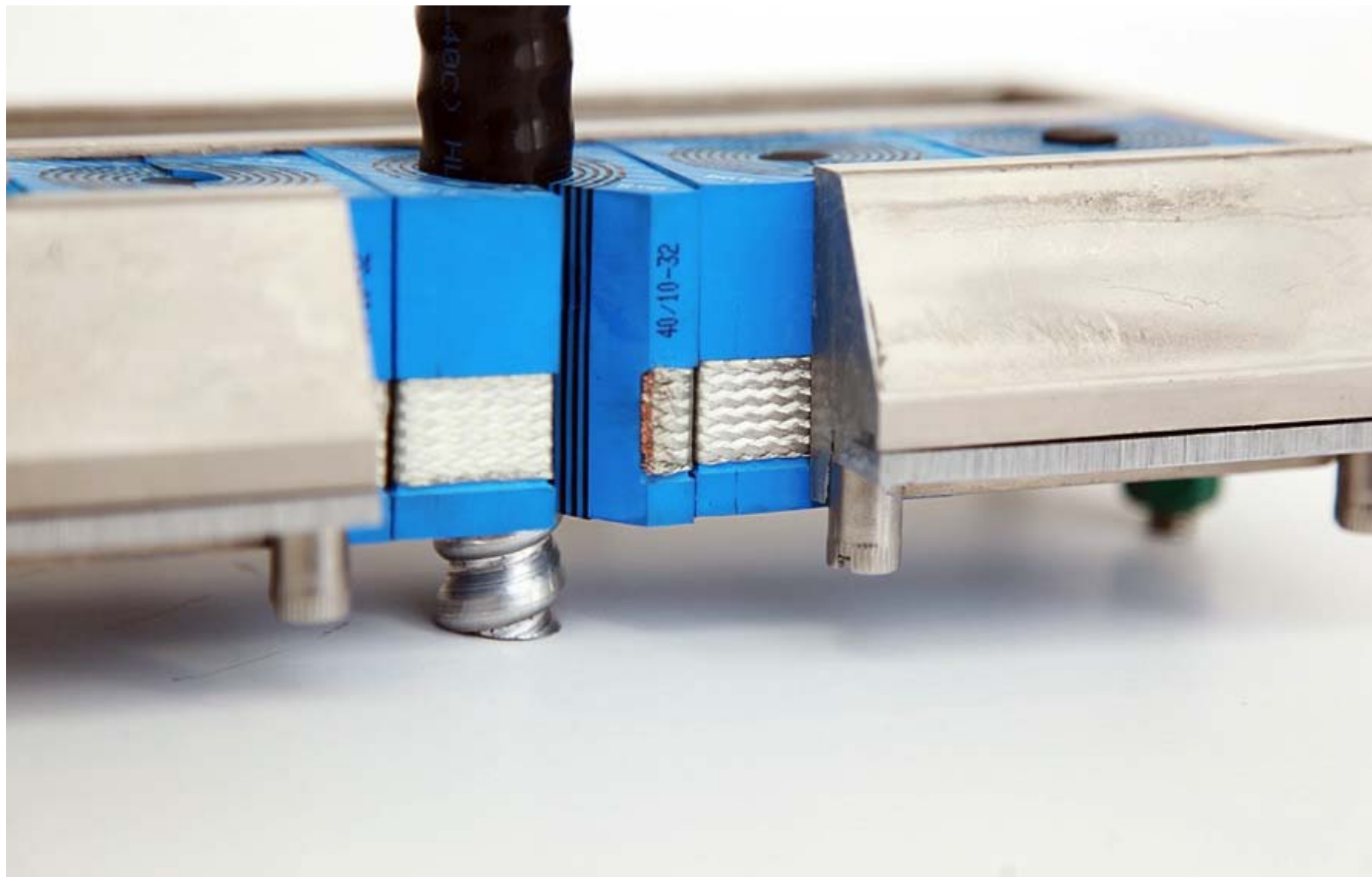


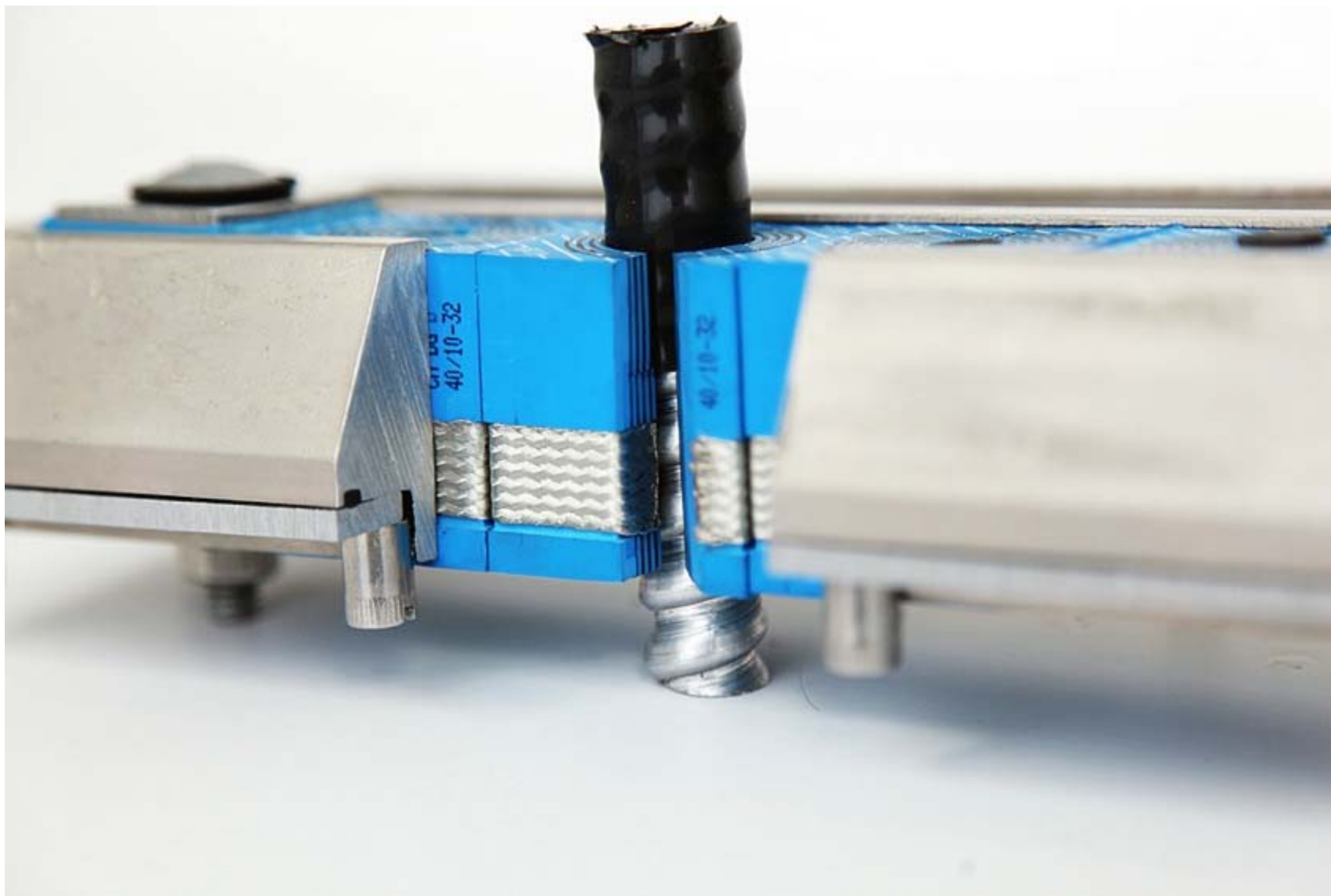
## Easy to design and install

- Frames: stainless, galvanized steel or primed mild steel
- Modules: 7 sizes for cables from 3.0-99mm (0.118 in-3.898 in)
- Compression unit: integrated or separate.
- Estimated installation time is less than 10 min. per cable









# Roxtec frames for BG™ solutions

## Roxtec frames

The Roxtec BG™ modules are certified for use with the following Roxtec frames:



For more information about the frames, please see [www.roxtec.com](http://www.roxtec.com) or Roxtec product catalogue.



# Product design



- A recessed tin-plated copper braid with low contact impedance and high current carrying capability
- Braid flexibility allows for uneven surfaces such as corrugated, wired, and braided shields/armors
- Anti-short bushing and shrink tube may be required to protect inner conductors for some type of cables

# Modules for Roxtec BG™ solutions



RM BG™ B

- Regular (RM) and compact (CM) versions
- Roxtec BG™ modules for pass-through installations where environmental protection is required from both sides
- Roxtec BG™ B modules for cable terminations.

# Modules for Roxtec BG™ solutions



RM BG™



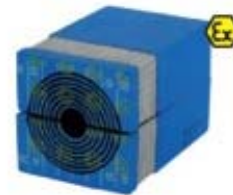
RM BG™ B



CM BG™ B



RM BG™ Ex

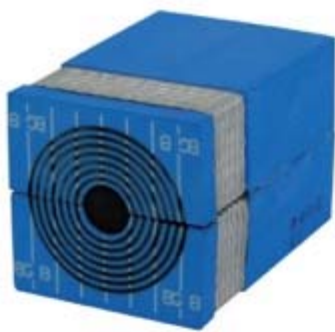


RM BG™ B Ex



CM BG™ B Ex

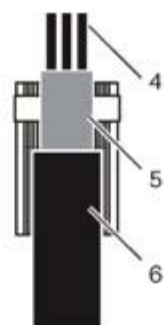
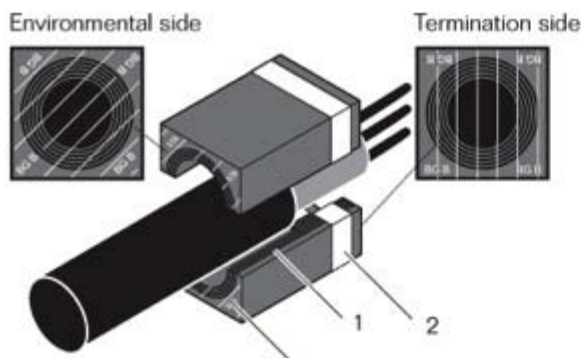




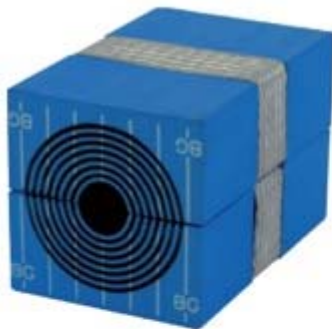
## Roxtec BG™ B module

The Roxtec BG™ B module has the durable, conductive braid for electrical safety on one side and environmental protection on the other. To be used with Roxtec Group RM or Group CM frames.

### Cable position in a RM BG™ B module



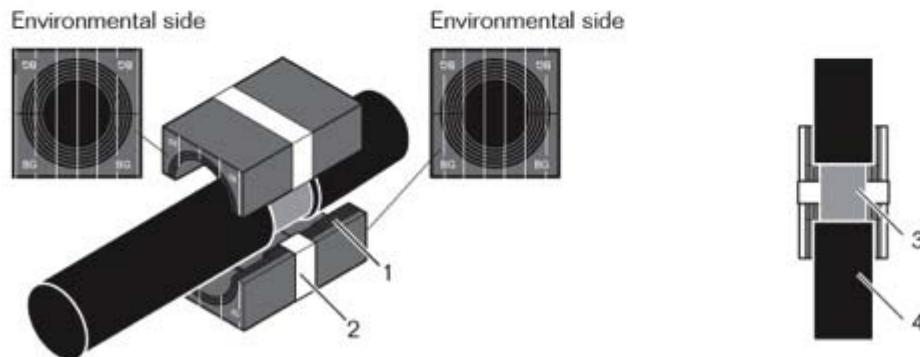
1. Multidiameter™ – adapts to cables and pipes of different sizes through modules with removable layers
2. Bonding/grounding braid
3. Environmental side
4. Conductors
5. Cable armor
6. Outer jacket



## Roxtec BG™ module

The Roxtec BG™ module has the durable, conductive braid for electrical safety in the middle and provides environmental protection at both ends. To be used with Roxtec Group RM frames.

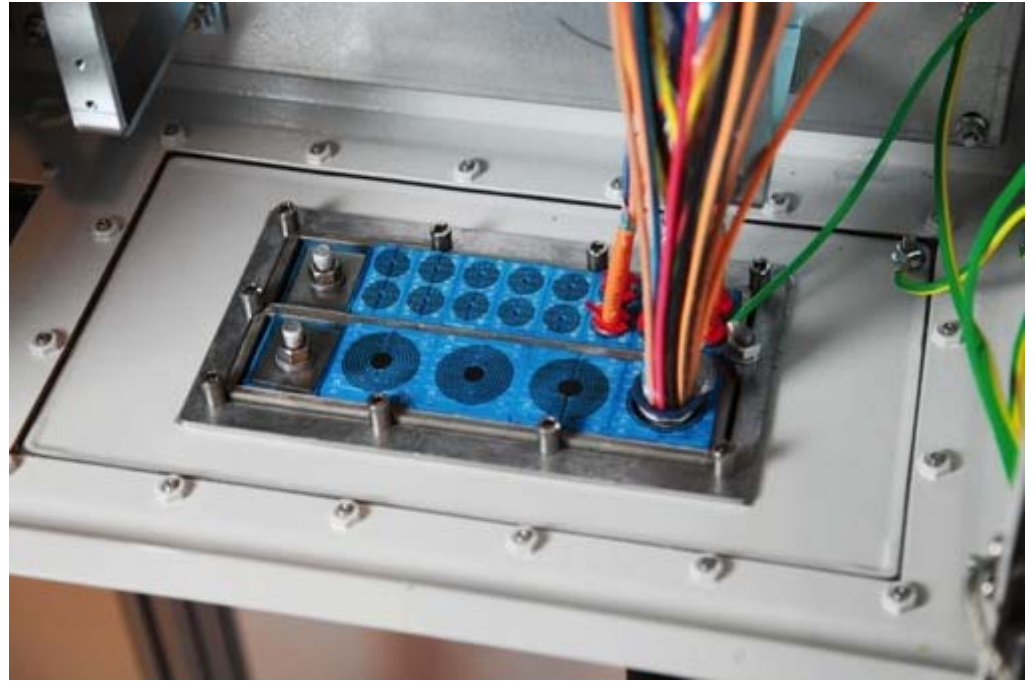
### Cable positions in a RM BG™ module



1. Multidiameter™ – adapts to cables and pipes of different sizes through modules with removable layers
2. Bonding/grounding braid
3. Cable armor/shield
4. Outer jacket



## More cables... less cabinet



- For control cabinets, junction boxes and heat trace enclosures
- Reduce size and weight of cabinets
- A single cut-out for up to 32 cables – instead of space for 32 individual glands.



## Efficiency and flexibility



- Add flexibility to design
- Improve timing of project and equipment delivery
- Design before final cable schedules are complete
- Adjust modules for a perfect fit in the field, if needed
- Manage high quantities of control cables
- Specify Roxtec BG™ solutions!
- One solution for all bonding and grounding needs

## Certified for electrical safety

- Approved for hazardous locations (Ex e)
- Bonding and grounding
- Lightning protection
- Fire- and blast rated, gas- and watertight
  - Certified UL/NEMA 4, 4x, 12, 13, IP66/67
  - AEx, IECEX, ATEX
  - Class I, Zone 1 and 2
  - Class I, Division 2 (not division 1 enclosures)



## Most metal clad and armor cable types accepted

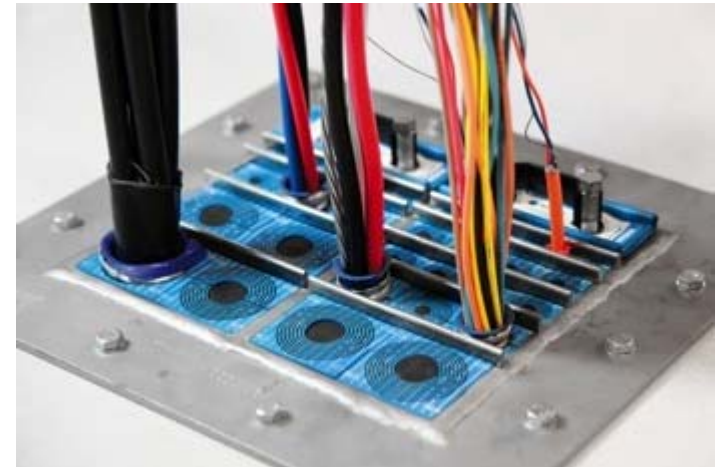


- Cables with a circular cross-section, such as wire and braided armored cables (..WA, ..WB), smooth metal tubes and foil sheeted cables
- Continuous welded and interlocking armored cables, such as MC, MC-HL, TECK, AC, ACWU and ACIC.





# Complete safety solution



- Designed to meet the highest requirements for bonding and grounding
- Provides certified protection against weather, blast, rodents and fire
- Certified to meet major international electrical schemes for low to high voltage applications.

# Multidiameter™ by Roxtec

- Adaptability to cables of different sizes based on modules with removable layers.
- Simplifies design, speeds up installation and minimizes the need for items in stock.
- Adapt to the cable armor and the cable sheath, to seal, bond and ground armored cables of varying shapes and dimensions.





**We Seal Your World™**